

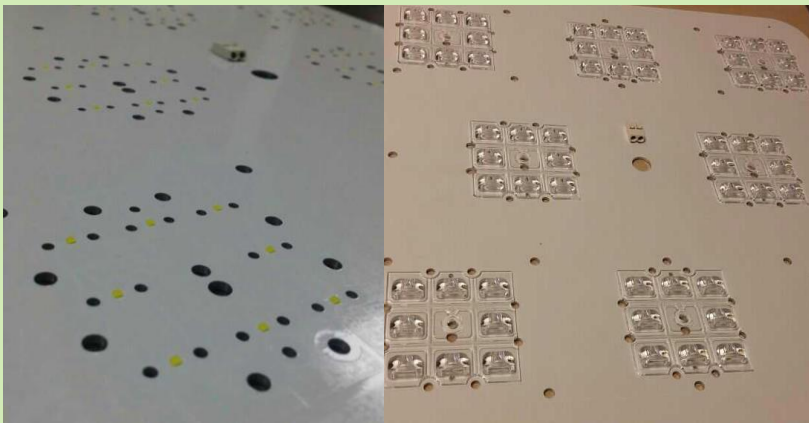
WICOP used in Projector Application

P-Company chose WICOP Y15 for a high density of light in their projector application. Y15 allowed a great light distribution performance with current lenses in the market. Besides, best lm/\$ solution, good efficiency, great thermal behavior made P Company's decision for selecting Y15.

Company: P-Company
Industry: Lighting
Region: East Europe

❖ Projector Application

For industrial zone illumination



❖ Light Fixture Specification

Power (W)	Flux (lm)	Efficacy (LPW)	CRI (Ra)	CCT (K)
65	8,500	130	80	4,000

❖ WICOP Y15

Part No.	V _F (V)	I _F (mA)	CCT (K)	CRI (Ra)	Flux (lm)
SZ8-Y15-WN-C8	Max4.7	350	4,000	Min.80	140

Challenges

- The customer was not sure about designing new optical lenses.
- Also, the customer was worried about SMT issue due to small size package.

Solutions

- WICOP with its small package size and high density of light allowed to use the lens which had been used for standard LEDs.
- Seoul Semi suggested a special nozzle to solve SMT issue.

Benefits & Results

- The customer was satisfied with wide light distribution with low thermal resistance.
- The customer gets benefits of lower cost, lower heat and more reliable product for industrial zone illumination.